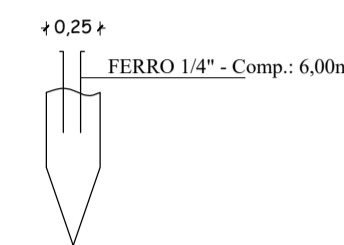


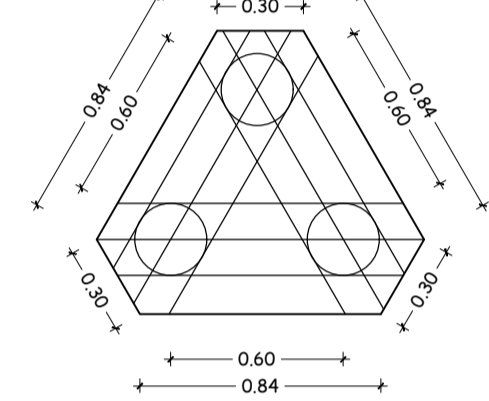
BROCA

D=25CM - PROF: 10,00M C/ 2 Ø DE 1/4"

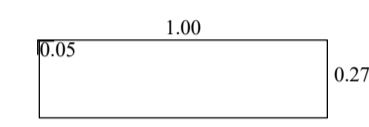


BLOCOS

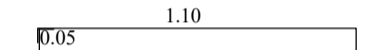
GAJOLA - H=30CM



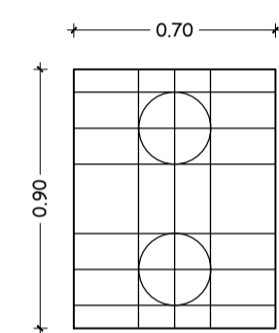
COM 03 BROCAS 09 FERRO 3/8"
QUANT.: 03
P15; P16; P17



QUANT.: 06 - Comp. 2,64m

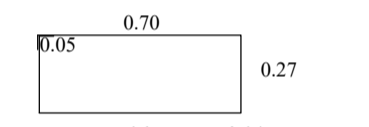


QUANT.: 03 - Comp. 2,84m

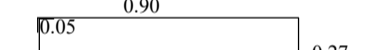


COM 02 BROCAS 09 FERRO 3/8"
QUANT.: 31

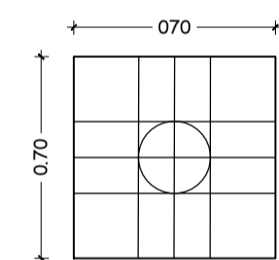
P04, P06, P08, P14, P18, P19, P21, P23, P25, P28, P29, P30, P31, P32, P33, P34, P35, P38, P39, P40, P42, P67, P69, P71, P77, P78, P79, P85, P103, P105, P107



QUANT.: 06 - Comp. 2,04m

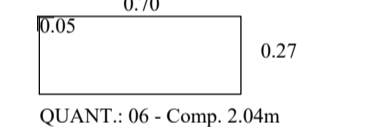


QUANT.: 03 - Comp. 2,44m



COM 01 BROCAS 06 FERRO 3/8"
QUANT.: 73 + 13 (PILARES PISCINA) = 86

MURO FRONTAL = 08



QUANT.: 06 - Comp. 2,04m

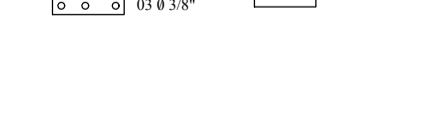
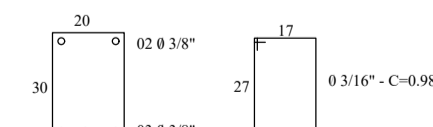
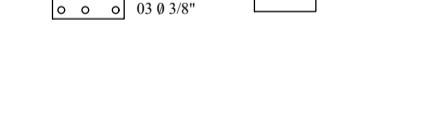
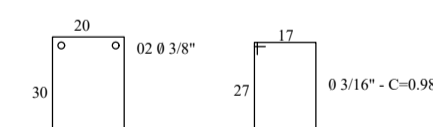
BALDRAMES

ESTRIBO A CADA 15CM

- VB01 = 4,85 VB22 = 4,40 (2X) VB41 = 2,45
- VB02 = 9,40 VB23 = 2,75 VB42 = 8,22
- VB03 = 9,75 VB24 = 11,15 VB43 = 1,70
- VB04 = 4,85 VB25 = 5,05 VB44 = 10,80
- VB05 = 9,40 VB26 = 6,55 VB47 = 5,65
- VB06 = 9,75 VB27 = 1,70 VB48 = 3,70
- VB07 = 8,00 VB28 = 10,55 VB49 = 9,75
- VB08 = 5,85 VB29 = 1,00 VB50 = 8,22
- VB09 = 10,35 VB30 = 7,15 (2X) VB51 = 4,30
- VB10 = 8,00 VB31 = 7,15 VB52 = 3,95
- VB11 = 5,85 VB32 = 6,25 M.F. VB53 = 3,70
- VB12 = 10,35 VB33 = 6,75 M.F. VB54 = 4,30
- VB13 = 11,05 VB34 = 6,70 (2X) VB55 = 2,95
- VB14 = 8,00 VB35 = 9,75 VB56 = 11,65
- VB15 = 8,00 VB36 = 6,55 VB57 = 11,65
- VB16 = 3,40 VB37 = 9,75 VB58 = 4,20
- VB17 = 4,80 VB38 = 9,00 VB59 = 2,75
- VB18 = 10,90 VB39 = 4,30 VB60 = 3,05
- VB19 = 11,15 VB40 = 1,70 VB61 = 9,45
- VB20 = 9,70 VB41 = 6,70 (2X) VB62 = 3,10 M.F.
- VB21 = 11,15 VB42 = 4,30 VB63 = 9,45
- VB64 = 6,65
- VB65 = 11,60
- VB66 = 11,25

OB: VB 22, VB34, VB35 E VB41 - FUNDAÇÃO PISCINA E RESPALDO PISCINA
M.F. MURO FRONTAL
VBP: VIGA BALDRAME PISCINA

- VB01 = 1,80 (2X)
- VB02 = 5,55 (2X)
- VB03 = 1,80 (2X)
- VB04 = 3,00 (2X)
- VB05 = 2,75 (2X)
- VB06 = 1,80 (2X)
- VB07 = 1,80 (2X)
- VB08 = 1,80 (2X)
- VB09 = 1,80 (2X)
- VB10 = 5,55 (2X)
- VB11 = 1,80 (2X)



PROJETO ESTRUTURAL

FOLHA 01/03
Escala = 1:100

- OBRA = CONSTRUÇÃO DO CIAPPEC
- LOCAL = RUA RAUL PEREIRA PINTO, SN
- BAIRRO = CENTRO
- CIDADE = CAREAÇU - MG
- PROPRIETÁRIO = PREFEITURA MUNICIPAL DE CAREAÇU



SITUAÇÃO S/ ESCALA

DECLARO QUE A APROVAÇÃO DO PROJETO NÃO IMPLICA NO RECONHECIMENTO POR PARTE DA PREFEITURA QUANTO AO DIREITO DE PROPRIEDADE DO TERRENO

PREFEITURA MUNICIPAL DE CAREAÇU
CNPJ: 17.935.388/0001-15

ÁREAS

TERRENO	9457,20 m ²
PAY. TÉRREO	869,56 m ²
TOTAL	869,56 m ²

ARQ. EDIONE SÍLVIA FERREIRA
CAU A 19.326-7

APROVAÇÕES

APROVADO
14 DE MAIO DE 2024.

PREFEITURA MUNICIPAL DE CAREAÇU
CNPJ: 17.935.388/0001-15

Prancha: Fundação